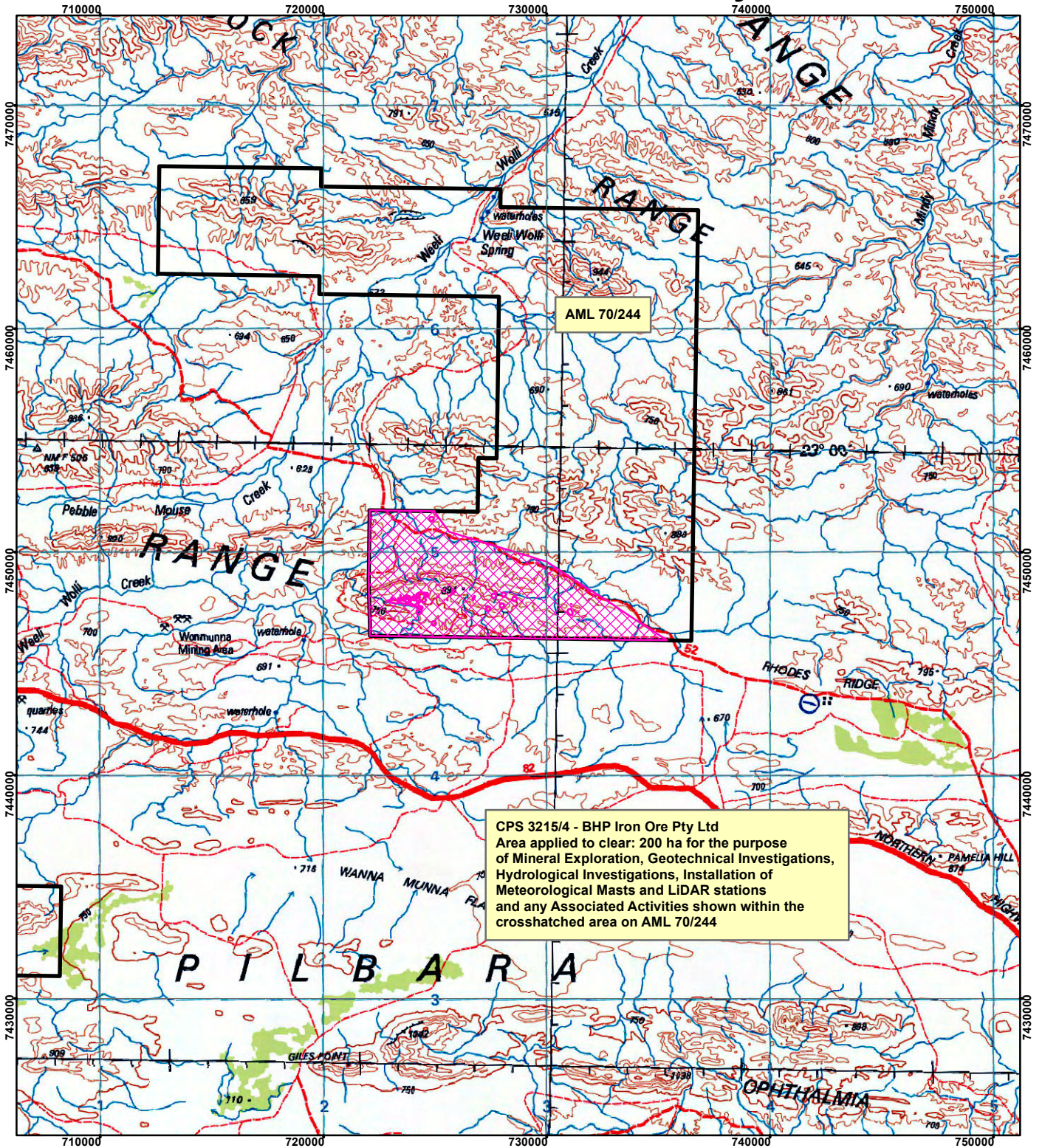


CPS 3215/4 - BHP Iron Ore Pty Ltd



CPS 3215/4 - BHP Iron Ore Pty Ltd
 Area applied to clear: 200 ha for the purpose
 of Mineral Exploration, Geotechnical Investigations,
 Hydrological Investigations, Installation of
 Meteorological Masts and LiDAR stations
 and any Associated Activities shown within the
 crosshatched area on AML 70/244

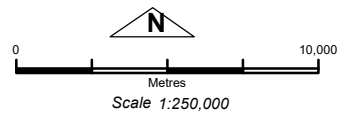
LEGEND



Clearing Instruments



Mining Tenements



Geocentric Datum Australia 1994

Note: the data in this map have not been projected. This may result in geometric distortion or measurement inaccuracies.

..... Date

Officer with delegated authority under Section 20 of the Environmental Protection Act 1986

Information derived from this map should be confirmed with the data custodian acknowledged by the agency acronym in the legend.

